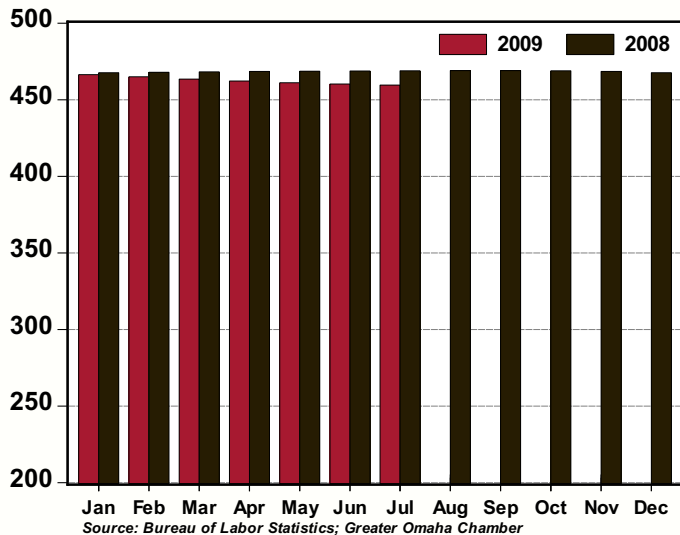


GREATER OMAHA INDICATORS

LOCAL ECONOMY

Published August 2009

**Total Non-Farm Employment,
Omaha MSA: 2009 v 2008**
(thousands, seasonally adjusted)



- Total employment in the Omaha MSA declined by 0.1 percent in July.
- The Government (+2.5 percent), Education and Healthcare (+0.6 percent) and Other Services (+0.2 percent) sectors posted increases for the month.
- The unemployment rate for Omaha was unchanged at 5.2 percent in July. The unemployment rate for Nebraska edged downwards to 4.9 percent in July.
- The housing sector continues to post solid results. Home sales increased 3.1 percent in July and single-family permits increased 7.2 percent.
- Non-residential permits were unchanged in July, with the series showing some signs of stabilization.
- For the 12 months ending in May, net taxable sales declined by a modest 0.4 percent. Retail and food service sales, excluding autos, at the national level were down 8.9 percent over the same time period.

NATIONAL ECONOMY

- Real GDP growth rate printed unrevised at -1.0 percent. This report suggests that the worst of the current downturn is behind us and supports our outlook that the recovery would begin during the second half of the year.
- According to the GDP report, corporate profits increased at a 22.8 percent annual rate in Q1 and a 24.9 percent annual rate in Q2. Domestic operations accounted for all of the increase in profits in Q2.
- These profits will likely lead to increased business investment and improving labor market conditions over the next few quarters.
- For the three months ending in July, new orders for capital goods (excluding defense and aircraft) increased at a 34.7 percent annual rate. Shipments of these core goods have increased at a 5.7 percent annual rate over the same time period. Shipments are used in the GDP accounting for nonresidential investment.
- Housing sectors activity continues its solid performance: new home sales increased 9.6 percent in July; existing home sales increased 7.2 percent; and single-family starts increased 1.7 percent.

AREA HIGHLIGHTS

Fidelity National Title Group, Inc. Expands in Omaha

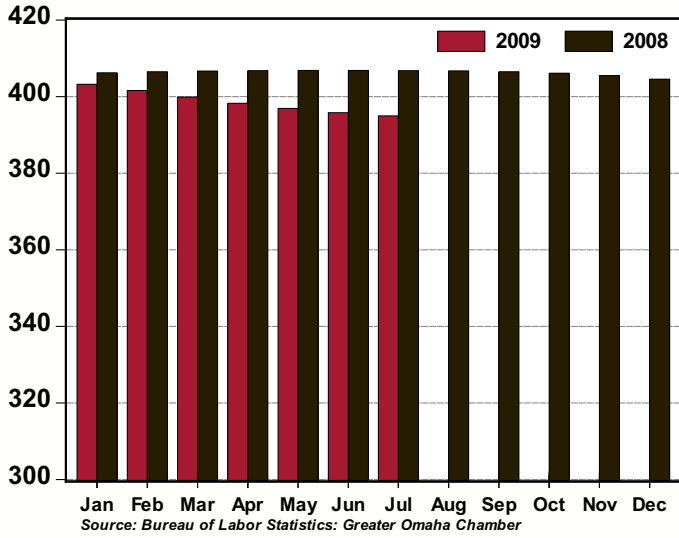
Fidelity National Title Group, Inc., the nation's largest title insurance company, has expanded in Omaha. The company moved from four west Omaha locations into office space at 6601 Frances St. in Aksarben Village. Fidelity expects to have 270 employees in the office, the majority of them lawyers.

Fidelity executives credited help from the State of Nebraska, the Greater Omaha Chamber, local government, and the acquisition of two Omaha-based title insurance companies for the expansion. Investment of approximately \$7.5 million in equipment and other expenses, plus the new hires, likely will qualify the company for state income tax credits and money to train newly hired lawyers in real estate law. The incentives are available under the Nebraska Advantage economic development program.

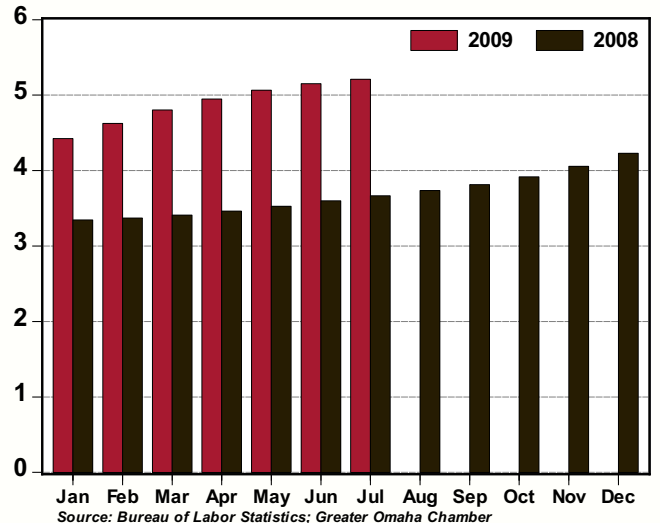
According to Fidelity executives, the number one factor in consolidating much of the company's claims management in Omaha is the quality of the people. "It was a very easy decision for us, in a sense," said Peter Sadowski, chief legal officer. "It became very obvious to us that the people we hired here were high-quality, hardworking. Their productivity is where the savings comes in."

Source: Omaha-World Herald

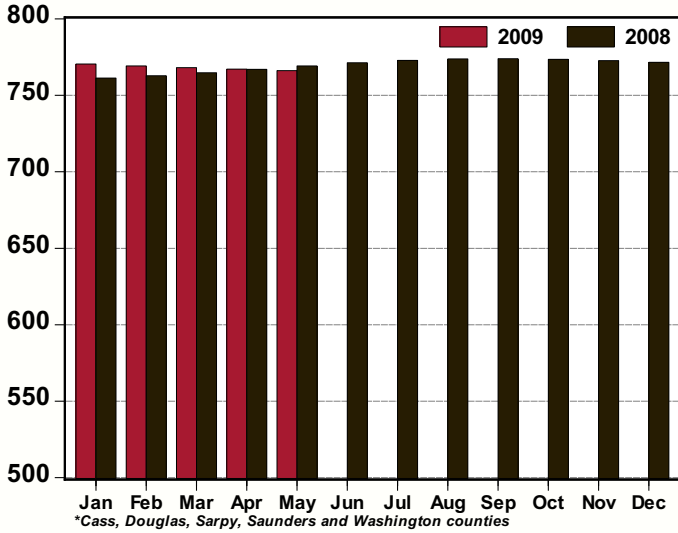
Total Private Employment, Omaha MSA: 2009 v 2008
(thousands, seasonally adjusted)



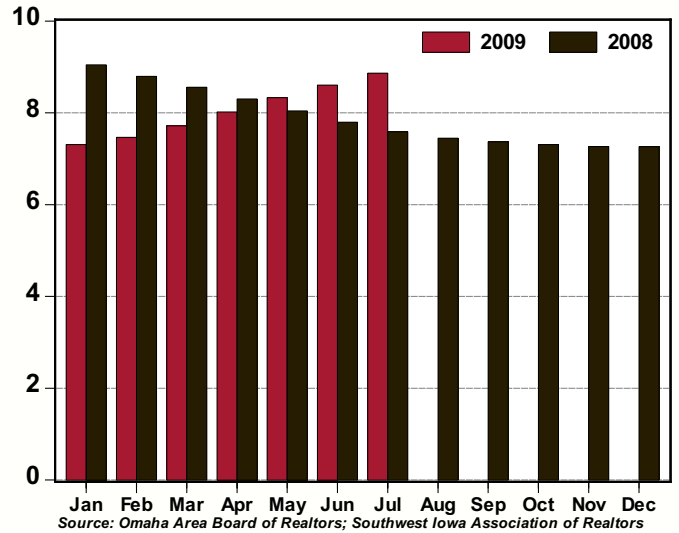
Unemployment Rate, Omaha MSA: 2009 v 2008
(%, seasonally adjusted)



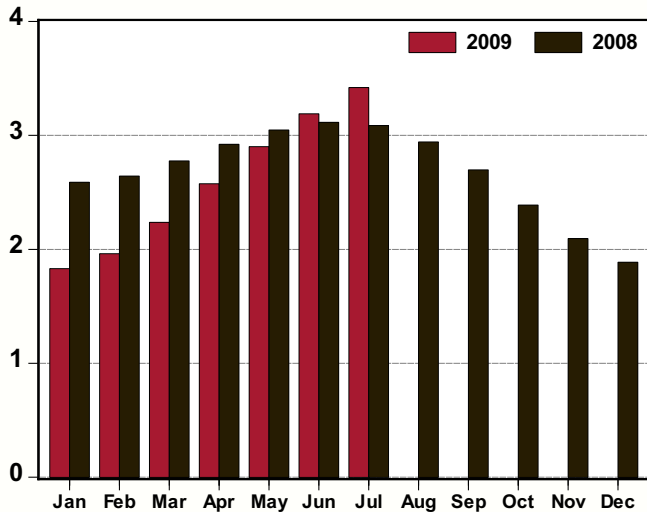
Net Taxable Sales, Nebraska Counties in the Omaha MSA*: 2009 v 2008
(\$ millions, seasonally adjusted)



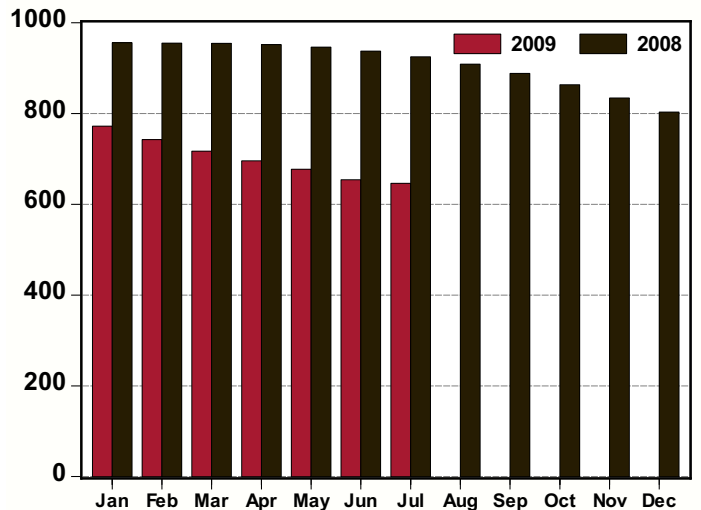
Home Sales, Omaha MSA: 2009 v 2008
(thousands, seasonally adjusted annual rate)



Single-Family Residential Permits, Omaha MSA: 2009 v 2008
(thousands, seasonally adjusted annual rate)



Non-Residential Permits, Omaha MSA: 2009 v 2008
(number of permits, seasonally adjusted annual rate)



Greater Omaha Indicators	Jul 09	Jun 09	May 09	Apr 09	Mar 09	Feb 09	Jan 09	Dec 08	Nov 08	Oct 08	Sep 08	Aug 08	Jul 08
Labor Market: Household Survey													
Labor Force (#,sa)	453,858	453,843	453,933	454,138	454,570	455,142	455,645	455,995	456,178	456,236	456,240	456,303	456,650
Employment (#,sa)	430,211	430,461	430,947	431,664	432,737	434,096	435,486	436,717	437,674	438,362	438,845	439,262	439,911
Unemployment (#,sa)	23,647	23,382	22,986	22,474	21,833	21,046	20,159	19,278	18,504	17,874	17,395	17,041	16,739
Unemployment Rate - Omaha (% ,sa)	5.2	5.2	5.1	4.9	4.8	4.6	4.4	4.2	4.1	3.9	3.8	3.7	3.7
Unemployment Rate - Nebraska (% ,sa)	4.9	5.0	4.8	4.5	4.7	4.3	4.3	3.9	3.6	3.6	3.4	3.3	3.3
Unemployment Rate - US (% ,sa)	9.4	9.5	9.4	8.9	8.5	8.1	7.6	7.2	6.7	6.5	6.1	6.1	5.7
Labor Market: Establishment Survey													
Total Employment (000s, sa)	459.6	460.2	461.1	462.1	463.5	465.0	466.4	467.7	468.5	468.9	469.1	469.0	468.9
Private Employment (000s, sa)	395.0	395.8	396.9	398.3	399.9	401.6	403.2	404.6	405.5	406.1	406.5	406.7	406.8
Construction/Mining (000s, sa)	24.7	24.9	25.1	25.4	25.6	25.9	25.8	25.7	25.7	25.6	25.7	25.7	25.8
Manufacturing (000s, sa)	32.1	32.2	32.3	32.5	32.7	32.9	33.1	33.3	33.4	33.5	33.6	33.7	33.8
Trade, Trans., & Utilities (000s, sa)	96.0	96.3	96.6	97.1	97.6	98.1	98.6	98.9	99.2	99.4	99.6	99.7	99.9
Information (000s, sa)	11.3	11.4	11.5	11.6	11.7	11.7	11.8	11.9	11.9	12.0	12.0	12.1	12.1
Financial Activities (000s, sa)	39.7	39.7	39.7	39.6	39.7	39.7	39.7	39.8	39.8	39.7	39.7	39.8	39.8
Prof. and Business Services (000s, sa)	61.0	61.4	61.9	62.4	63.0	63.7	64.3	64.8	65.2	65.4	65.6	65.7	65.7
Educ. and Health Services (000s, sa)	67.8	67.9	67.9	68.0	68.0	68.0	67.9	67.9	67.8	67.7	67.6	67.4	67.2
Leisure and Hospitality (000s, sa)	45.4	45.2	45.1	44.9	44.9	45.0	45.2	45.5	45.8	45.9	45.9	45.9	45.7
Other Services (000s, sa)	16.9	16.9	16.8	16.8	16.8	16.8	16.8	16.8	16.8	16.8	16.8	16.7	16.7
Government (000s, sa)	64.6	64.4	64.1	63.9	63.6	63.4	63.2	63.1	63.0	62.8	62.6	62.3	62.1
Construction Permits													
Total Permits (#, sa)	341	320	299	277	247	225	221	231	246	274	314	325	338
Valuation (\$000, nsa)	92,064	100,538	83,843	78,575	51,229	48,900	35,176	61,373	56,557	165,069	139,449	81,367	93,027
Single-Family Residential Permits (#, sa)	285	266	242	215	186	163	153	157	175	199	225	245	257
Valuation (\$000, nsa)	49,976	51,286	52,517	40,600	21,996	25,494	12,049	11,725	18,308	36,896	47,104	44,804	54,588
Non-Residential Permits (#, sa)	54	54	56	58	60	62	64	67	70	72	74	76	77
Valuation (\$000, nsa)	41,744	49,252	31,179	33,195	29,078	23,406	18,687	44,393	38,031	109,183	67,000	33,150	31,319
Multi-Family Residential Units (#, nsa)	6	0	2	80	2	0	80	133	4	107	482	36	112
Valuation (\$000, nsa)	344	0	147	4,772	158	0	4,440	5,255	219	18,990	25,345	3,412	7,120
New and Existing Home Sales													
Total Sales (#, sa)	836	814	790	764	738	716	702	697	697	701	706	714	727
Total Value (\$mm, nsa)	166.8	159.4	156.5	127.4	100.2	72.6	56.8	87.4	69.5	130.9	123.5	142.3	146.3
Utilities													
Electricity Customers (#, nsa)		342,613	342,503	341,906	341,900	341,967	341,725	341,534	341,105	340,265	340,015	339,990	339,311
Total Electricity Sold (mwh, 000s, sa)		869.1	881.8	892.6	900.8	902.6	894.6	881.5	870.2	867.6	876.9	891.1	903.4
Transportation													
Airline Passengers (000s, sa)	356.8	356.2	355.6	354.8	353.7	352.7	352.1	352.4	353.6	355.6	358.2	360.9	363.5
Airline Cargo (mm lbs., sa)	8.6	8.7	8.8	8.9	9.0	9.1	9.3	9.4	9.5	9.6	9.8	9.9	10.1
Commerce													
Net Taxable Sales (\$mm, sa)	766.1	767.1	766.1	767.1	768.1	769.2	770.4	771.5	772.6	773.5	773.9	773.7	772.8
Motor Vehicles (\$mm, sa)	87.3	87.8	88.3	88.3	88.3	88.9	89.4	89.9	90.3	90.7	91.0	91.3	91.6
Prices													
Consumer Price Index - U.S. (yr/yr %, nsa)	-2.1	-1.4	-1.3	-0.7	-0.4	0.2	0.0	0.1	1.1	3.7	4.9	5.4	5.6
CPI - Midwest (yr/yr %, nsa)	-2.5	-1.7	-1.9	-1.5	-0.8	-0.2	-0.3	-0.3	0.5	3.3	4.8	5.4	5.6
Personal Consumption Expenditure Index (yr/yr %, sa)	-0.8	-0.4	-0.3	0.1	0.2	0.6	0.5	0.6	1.4	3.2	4.1	4.4	4.5
PCE Index, ex Food & Energy (yr/yr %, sa)	1.4	1.5	1.6	1.7	1.7	1.8	1.7	1.8	2.1	2.3	2.5	2.7	2.7

Note: sa = seasonally adjusted; nsa = not seasonally adjusted; na = not available.

BUSINESS BAROMETER

The following companies are new or have recently expanded operations in the Greater Omaha metro area. Announcements in this list have been gathered from public releases and the local media. Investment estimates are based on public announcements, while employment is based on public announcements and industry averages.

July 2009 New and Expanding Companies

<u>Company</u>	<u>Location (approximate)</u>	<u>Industry</u>	<u>Investment</u>	<u>Added Employment</u>
CDC Enterprises Inc.	TBD - North Omaha	Manufacturer		200
Dante Pizzeria Napoletana	168th Street & W. Center Rd.	Restaurant		10
Pentagon Federal Credit Union	502 Fortune Drive	Credit union	\$4,000,000	
"Pinky" Winkles	Bel-Air Plaza	Gift store		5
QC Supply	21206 Cumberland Drive	Farm supply retailer		15
Chi-Town Chicken	TBA - North Omaha	Restaurant		5
YFC, Inc.	TBA	Non-profit event coordination		
WONE 1710	TBA - North Omaha	Radio station		5
Motion41 Dance	120th St. & W. Center Rd.	Dance studio		2
Control Depot	9304 G Court	Building automation consulting		3
Five Guys Burgers & Fries	697 N. 132nd St.	Restaurant		10
Habitwise	TBA	Health tracking bracelets	2	
The Bedding Company	Lake Manawa Power Centre	Mattress retailer		5
Rock Bottom Restaurant	11th & Harney	Restaurant		20
		Total YTD 2009	\$292,531,500	2,271