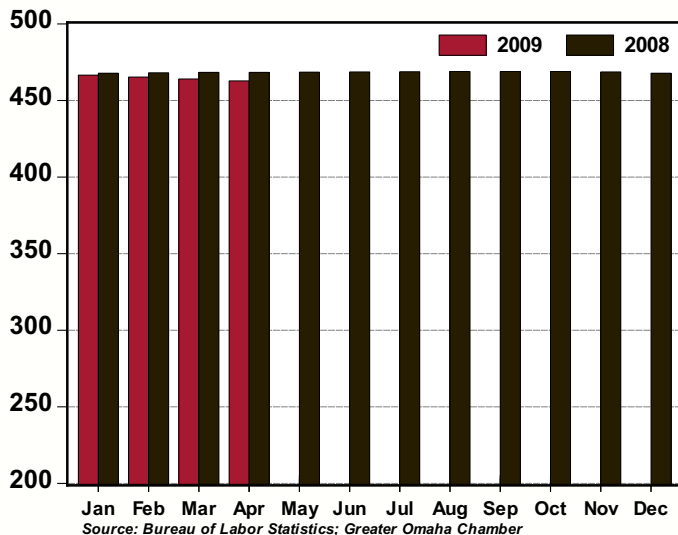


GREATER OMAHA INDICATORS

LOCAL ECONOMY

Published May 2009

**Total Non-Farm Employment,
Omaha MSA: 2009 v 2008**
(thousands, seasonally adjusted)



- Total employment in the Omaha MSA declined a modest 0.3 percent in April.
- The Construction (+0.2 percent), Government (+0.1 percent) and Education and Health Care (+0.1 percent) sectors posted moderate increases for the month.
- Note: The U.S. Bureau of Labor Statistics has not released the April estimate for unemployment in the Omaha MSA. The March unemployment rate was 4.7 percent.
- April single-family housing permits posted a 2.4 percent increase compared to March. Non-residential permits declined 5.5 percent in April.
- Home sales increased for the fifth month in a row, increasing to 806 units in April (seasonally adjusted).
- February Net Taxable Sales increased by 2.4 percent from the same month one-year-ago (seasonally adjusted).

NATIONAL ECONOMY

- Incoming data are flashing signs that the end of the downturn is in sight.
- The Conference Board's Consumer Confidence Index for May increased to 54.9 from 40.8. Consumers' expectations for both business and labor market conditions continues to improve.
- The manufacturing sector continues to show signs of improving conditions, with regional surveys continuing to moderate off recent all-time lows. Indeed, the Richmond Fed Index (a measure of manufacturing in the Richmond Fed district) printed in positive territory for the first time in over a year, signaling expansion.
- Existing home sales beat expectations, slightly, with April posting a 2.9 percent increase.
- Finally, credit spreads continue to improve indicating that credit markets are functioning more smoothly.

AREA HIGHLIGHTS

Intersystems Opens New 140,000SF Manufacturing Facility in Omaha

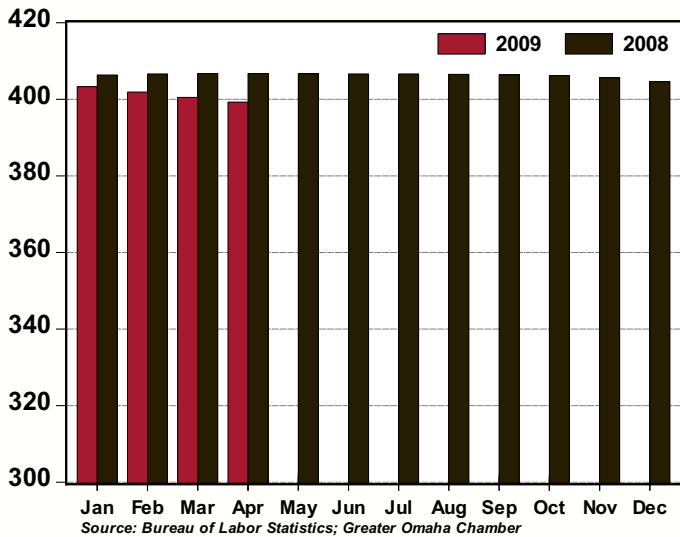
Intersystems, a division of Enduro Systems (ESI), formally opened its new state-of-the-art, 140,000 square foot facility. Intersystems is the anchor tenant in the new Rainwood Pointe office park. ESI contacted the Chamber's Greater Omaha Economic Development Partnership in 2006 as they began investigating options to consolidate the Intersystems division. Site locations under consideration at that time included Omaha, Council Bluffs and Houston.

ESI President & CEO Walter Greig said, "Previously, our Intersystems team was scattered among four separate buildings in two locations throughout the Omaha area. With the construction of our new facility, we're able to have all 150 employees for both plant and office operations in one location with space for future growth. This project wouldn't have gone as smoothly as it did without the help of the Greater Omaha Chamber."

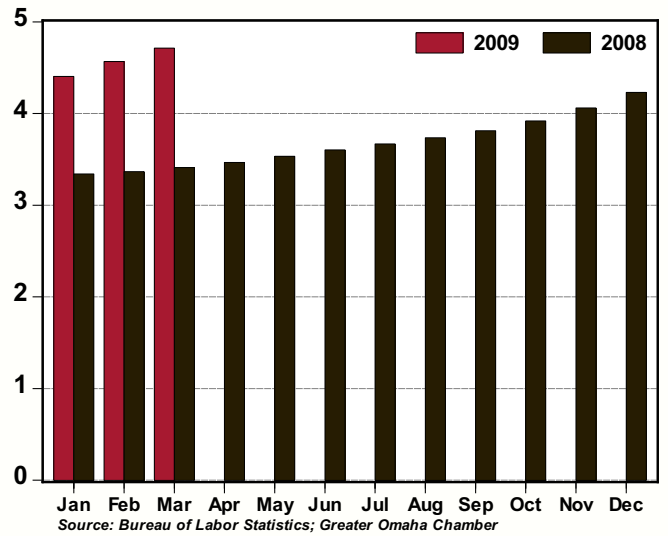
Interpublic Commits to Omaha for Information Technology Solutions

Interpublic Group (IPG), one of the world's largest advertising and marketing services companies announced Omaha as the location for their Global Operations Center. The IPG project began in August 2006 and represents a huge economic development win for the Greater Omaha Economic Development Partnership and the Omaha area. The end result was the selection of Omaha's Scott Technology Center as the location for IPG's Global Operations Center (GOC). The GOC will consolidate the internal IT functions for all IPG operations worldwide in Omaha. Prior to this move, these operations were located in New York, London, Hong Kong and Chicago. At the onset of this project, 14 cities were under consideration to host the IPG GOC.

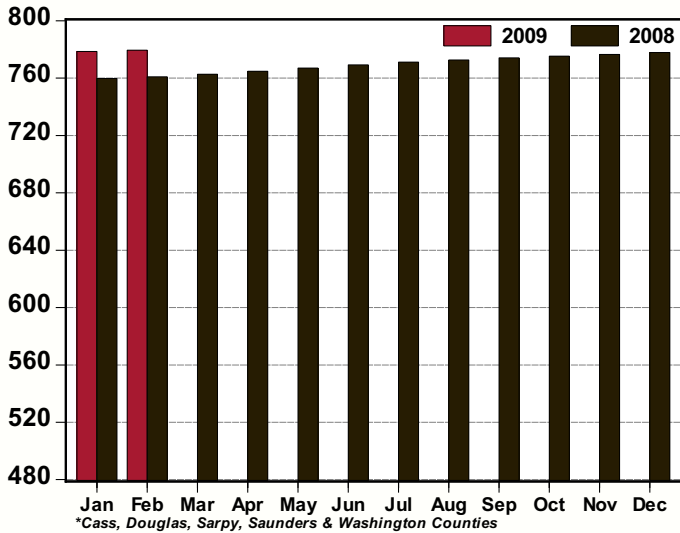
Total Private Employment, Omaha MSA: 2009 v 2008
(thousands, seasonally adjusted)



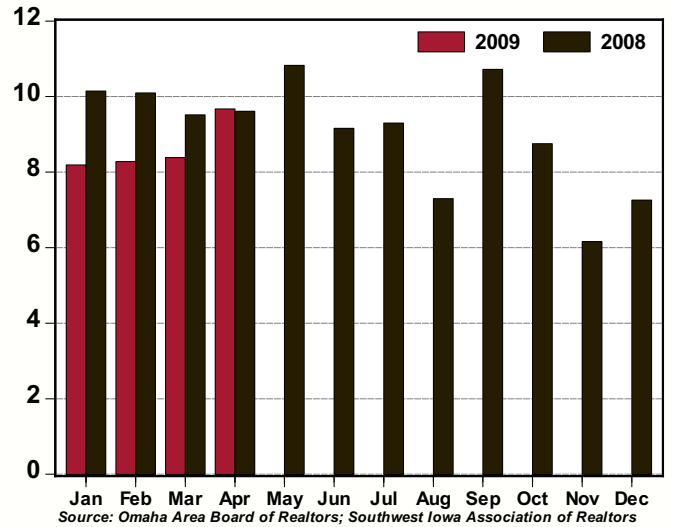
Unemployment Rate, Omaha MSA: 2009 v 2008
(%, seasonally adjusted)



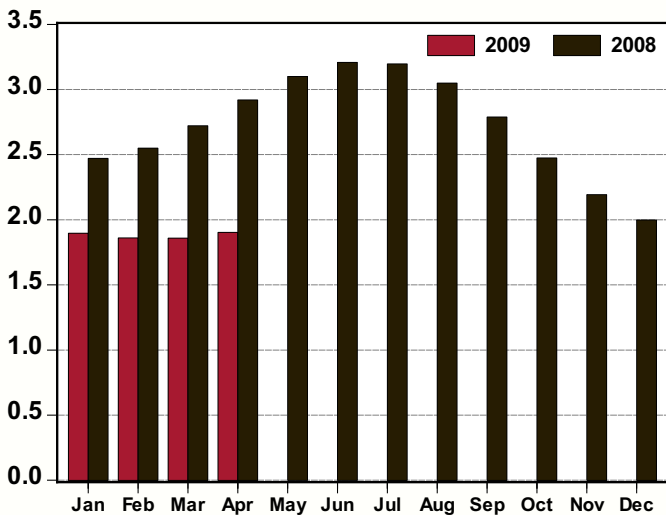
Net Taxable Sales, Nebraska Counties in the Omaha MSA*: 2009 v 2008
(\$ millions, seasonally adjusted)



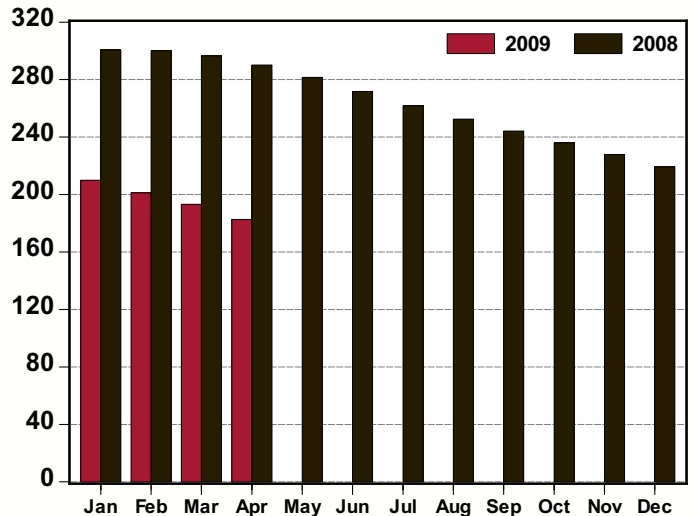
Home Sales, Omaha MSA: 2009 v 2008
(thousands, seasonally adjusted annual rate)



Single-Family Residential Permits, Omaha MSA: 2009 v 2008
(thousands, seasonally adjusted annual rate)



Non-Residential Permits, Omaha MSA: 2009 v 2008
(number of permits, seasonally adjusted annual rate)



Greater Omaha Indicators	Apr 09	Mar 09	Feb 09	Jan 09	Dec 08	Nov 08	Oct 08	Sep 08	Aug 08	Jul 08	Jun 08	May 08	Apr 08
Labor Market: Household Survey													
Labor Force (#,sa)		455,438	455,615	455,813	456,036	456,216	456,260	456,261	456,330	456,644	457,025	457,213	457,147
Employment (#,sa)		433,972	434,802	435,740	436,750	437,688	438,377	438,867	439,294	439,890	440,556	441,056	441,300
Unemployment (#,sa)		21,465	20,813	20,073	19,286	18,528	17,883	17,394	17,046	16,754	16,470	16,157	15,847
Unemployment Rate - Omaha (% ,sa)		4.7	4.6	4.4	4.2	4.1	3.9	3.8	3.7	3.7	3.6	3.5	3.5
Unemployment Rate - Nebraska (% ,sa)	4.4	4.6	4.3	4.3	3.9	3.6	3.6	3.4	3.3	3.3	3.3	3.2	3.3
Unemployment Rate - US (% ,sa)	8.9	8.5	8.1	7.6	7.2	6.7	6.5	6.1	6.1	5.7	5.5	5.5	5.0
Labor Market: Establishment Survey													
Total Employment (000s, sa)	462.8	464.0	465.2	466.5	467.7	468.5	468.9	469.0	468.8	468.7	468.5	468.4	468.3
Private Employment (000s, sa)	399.2	400.5	401.9	403.3	404.6	405.6	406.1	406.4	406.5	406.6	406.6	406.7	406.7
Construction/Mining (000s, sa)	26.0	25.9	25.9	25.8	25.8	25.7	25.7	25.7	25.8	25.8	25.9	25.9	25.9
Manufacturing (000s, sa)	32.5	32.7	32.9	33.1	33.3	33.4	33.5	33.6	33.7	33.7	33.8	33.9	34.0
Trade, Trans., & Utilities (000s, sa)	97.7	98.0	98.3	98.6	98.9	99.2	99.4	99.5	99.7	99.9	100.1	100.2	100.3
Information (000s, sa)	11.6	11.7	11.7	11.8	11.9	11.9	12.0	12.0	12.1	12.1	12.2	12.3	12.3
Financial Activities (000s, sa)	39.6	39.7	39.7	39.8	39.8	39.8	39.7	39.7	39.8	39.8	39.8	39.8	39.8
Prof. and Business Services (000s, sa)	63.0	63.4	63.9	64.3	64.8	65.2	65.4	65.5	65.6	65.7	65.7	65.8	65.8
Educ. and Health Services (000s, sa)	68.0	67.9	67.9	67.8	67.8	67.7	67.7	67.6	67.4	67.2	67.0	66.8	66.6
Leisure and Hospitality (000s, sa)	44.1	44.4	44.8	45.3	45.7	46.0	46.0	45.9	45.8	45.7	45.5	45.4	45.4
Other Services (000s, sa)	16.8	16.8	16.8	16.8	16.8	16.8	16.8	16.8	16.7	16.7	16.7	16.7	16.7
Government (000s, sa)	63.5	63.5	63.3	63.2	63.1	63.0	62.8	62.6	62.3	62.1	61.9	61.8	61.6
New Construction													
Total Permits (#, sa)	178	172	172	180	192	204	229	268	279	292	291	284	272
Valuation (\$000, nsa)	64,241	34,363	32,897	30,490	38,893	53,718	134,068	128,558	71,888	85,855	61,589	100,531	78,464
Single-Family Residential Permits (#, sa)	159	155	155	158	166	183	206	232	254	266	267	258	243
Valuation (\$000, nsa)	40,035	21,490	25,370	12,049	11,725	18,308	36,896	47,104	44,804	54,588	48,699	48,162	45,198
Non-Residential Permits (#, sa)	15	16	17	17	18	19	20	20	21	22	23	23	24
Valuation (\$000, nsa)	19,435	12,715	7,528	14,001	21,913	35,191	78,183	56,109	23,672	24,147	7,985	45,602	30,927
Multi-Family Residential Units (#, nsa)	80	2	0	80	133	4	107	482	36	112	100	42	30
Valuation (\$000, nsa)	4,772	158	0	4,440	5,255	219	18,990	25,345	3,412	7,120	4,905	6,767	2,339
New and Existing Home Sales													
Total Sales (#, sa)	806	699	690	683	605	514	730	894	608	775	764	902	801
Total Value (\$mm, nsa)	127.4	100.2	72.6	56.8	87.4	69.5	130.9	123.5	142.3	146.3	139.7	168.4	138.9
Utilities													
Electricity Customers (#, nsa)		341,900	341,967	341,725	341,534	341,105	340,265	340,015	339,990	339,311	339,187	338,995	338,921
Total Electricity Sold (mwh, 000s, sa)		979.3	950.5	919.1	890.1	869.1	861.9	871.3	889.4	904.6	914.1	923.0	940.3
Transportation													
Airline Passengers (000s, sa)	358.0	355.9	354.0	352.6	352.2	352.9	354.7	357.3	359.9	362.5	365.2	367.8	369.9
Airline Cargo (mm lbs., sa)	8.9	9.0	9.1	9.2	9.4	9.5	9.7	9.8	10.0	10.1	10.3	10.4	10.5
Commerce													
Net Taxable Sales (\$mm, sa)		779.4	778.5	778.5	777.8	776.5	775.3	774.1	772.7	771.1	769.2	767.0	764.7
Motor Vehicles (\$mm, sa)		90.5	90.3	90.3	90.5	90.7	90.8	91.0	91.2	91.5	91.8	92.2	92.6
Prices													
Consumer Price Index - U.S. (yr/yr %, nsa)	-0.7	-0.4	0.2	0.0	0.1	1.1	3.7	4.9	5.4	5.6	5.0	4.2	3.9
CPI - Midwest (yr/yr %, nsa)	-1.5	-0.8	-0.2	-0.3	-0.3	0.5	3.3	4.8	5.4	5.6	4.9	4.0	4.0
Personal Consumption Expenditure Index (yr/yr %, sa)		0.6	0.9	0.7	0.8	1.6	3.3	4.1	4.4	4.5	4.1	3.5	3.4
PCE Index, ex Food & Energy (yr/yr %, sa)		1.8	1.8	1.7	1.8	2.0	2.1	2.3	2.4	2.4	2.3	2.2	2.2

Note: sa = seasonally adjusted; nsa = not seasonally adjusted; na = not available.

BUSINESS BAROMETER

The following companies are new or have recently expanded operations in the Greater Omaha metro area. Announcements in this list have been gathered from public releases and the local media. Investment estimates are based on public announcements, while employment is based on public announcements and industry averages.

April 2009 New and Expanding Companies

<u>Company</u>	<u>Location (approximate)</u>	<u>Industry</u>	<u>Investment</u>	<u>Added Employment</u>
MB Hair Design	2215 Franklin St.	Hair salon		3
Pacific Interpreters	15th & Farnam	Medical interpreters		50
Swirls Donuts & Bakery	12317 West Maple Road	Donut shop		5
Office Building - Lund Co.	15950 West Dodge Road	Office building	\$18,000,000	0
Pacific Pointe	204th & Pacific Streets	Shopping center		
No Frills	204th & Pacific Streets	Grocery store	\$10,000,000	100
Mama Jo's Pizza & Pasta	3113 N. 120th St.	Restaurant		5
Bright From the Start	168th St. & Cornhusker Rd.	Daycare		5
Phoenix Creations	72nd & Dodge	Specialty store		2
Vapor Options	TBA	Electronic cigarette distributor		1
Art Mega	Westroads	Decorative box store		1
PayFlex Systems USA Inc.	10802 Farnam Drive	Customer service & information specialists		100
Cargill	U.S. Highway 30	Agribusiness		
Total YTD 2009			\$269,962,000	1,318